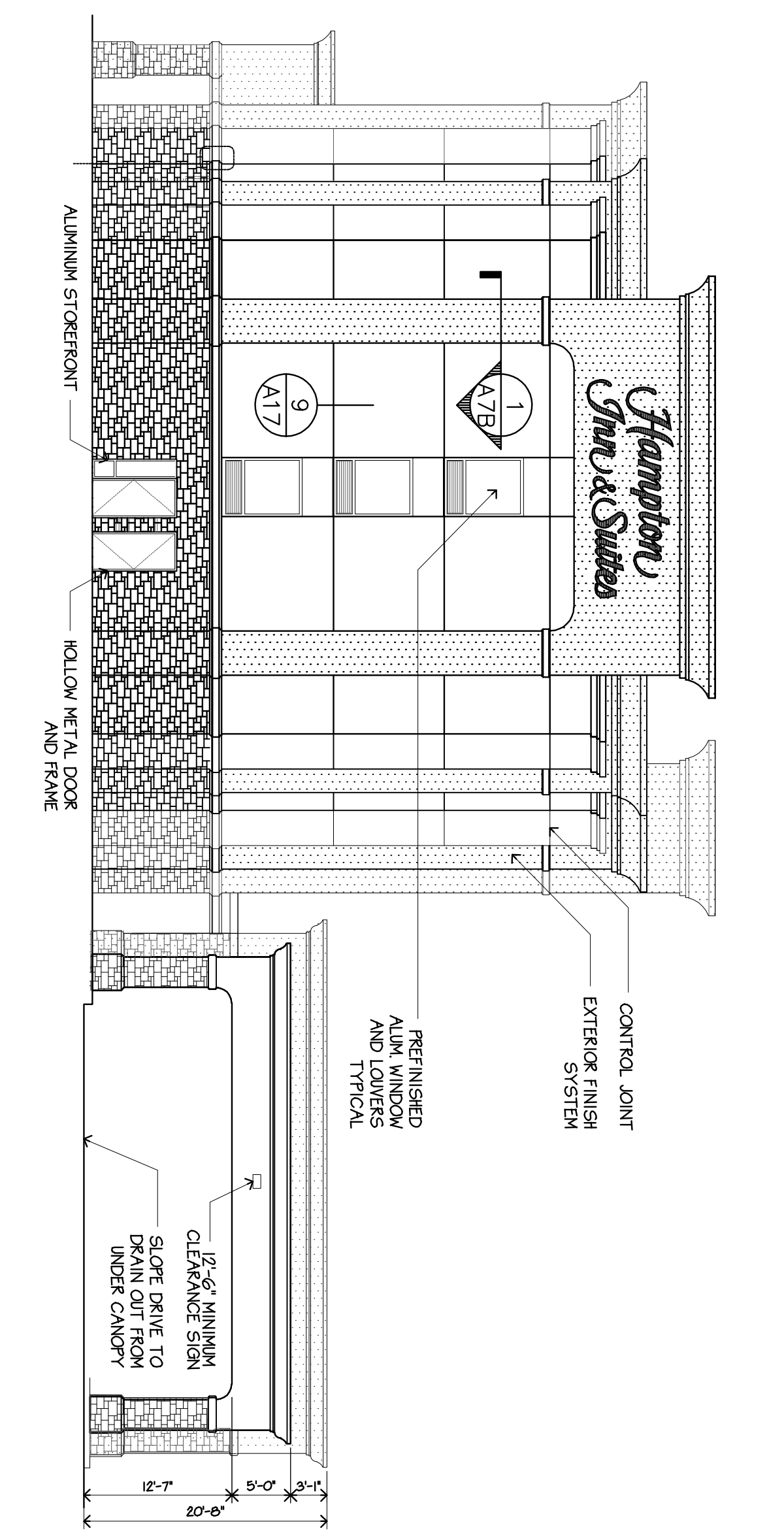
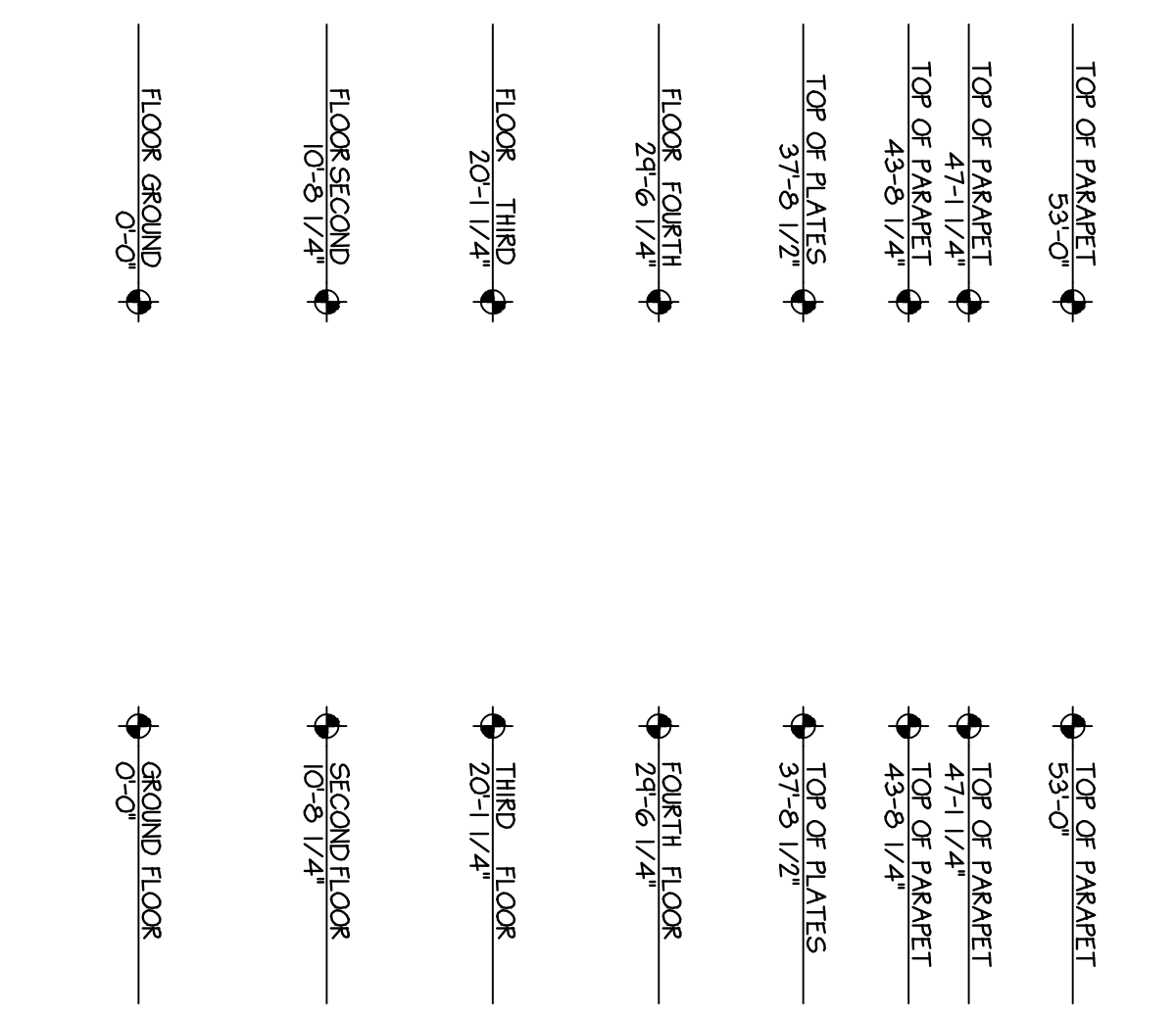


1 EAST ELEVATION
SCALE: 3/32" = 1'-0"

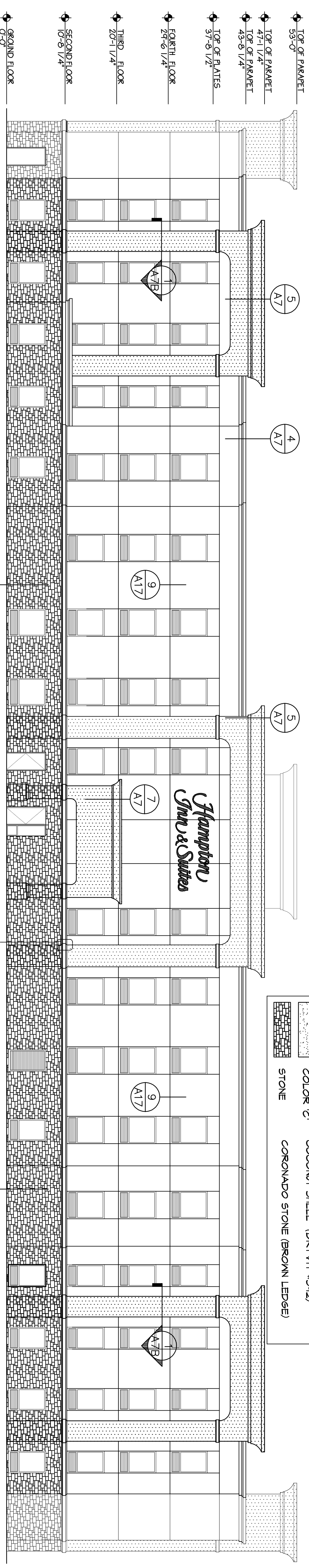


2 WEST ELEVATION
SCALE: 3/32" = 1'-0"

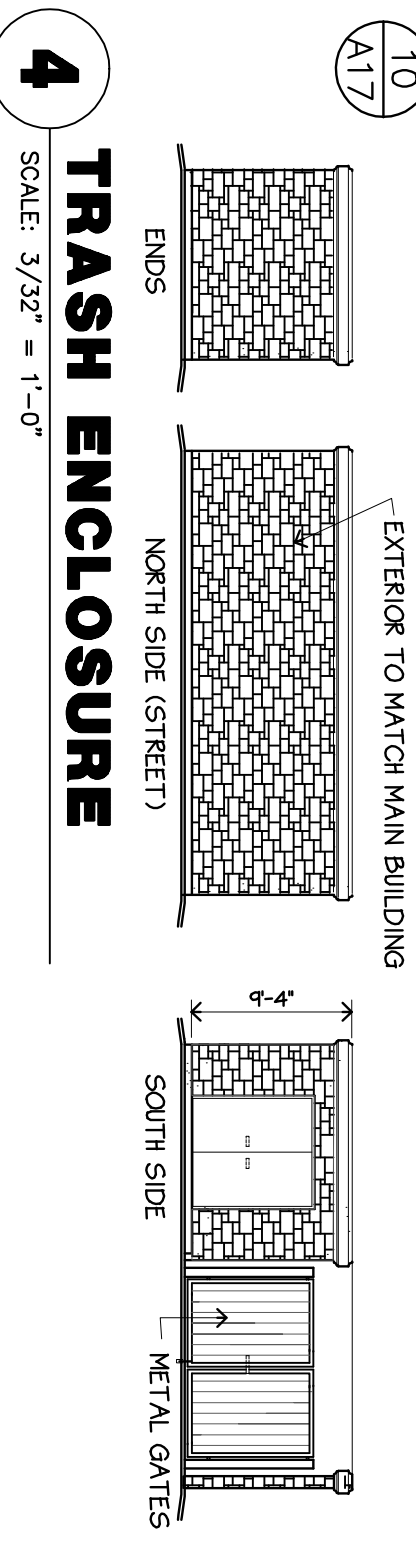
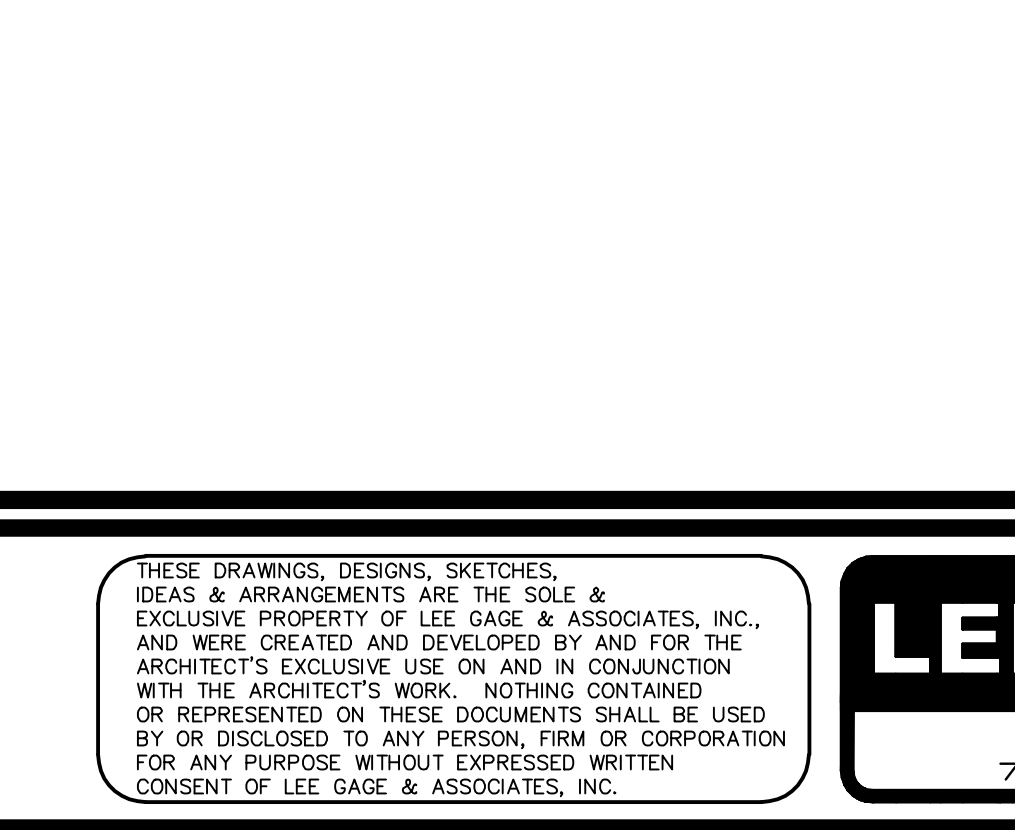


COLOR LEGEND

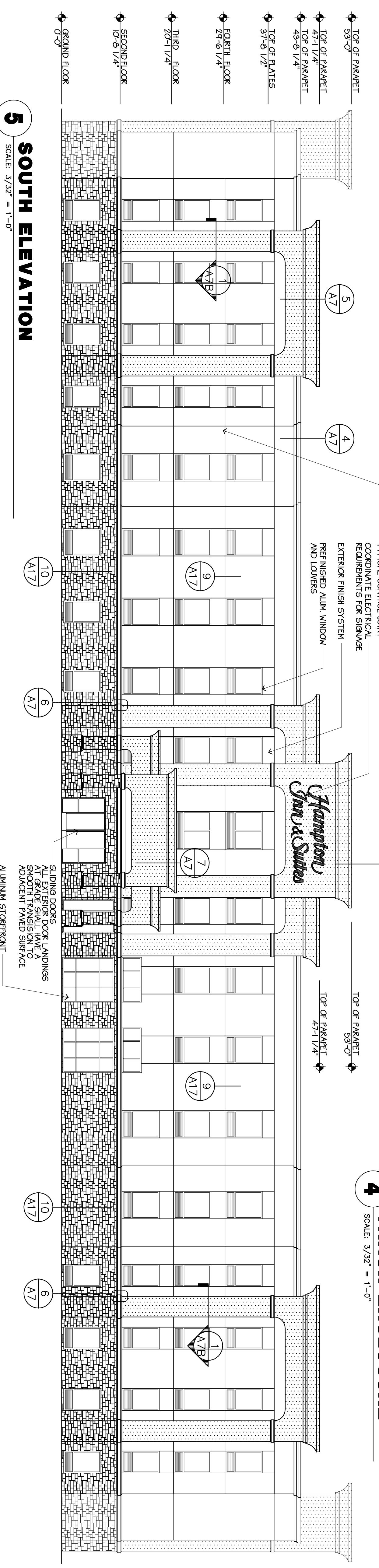
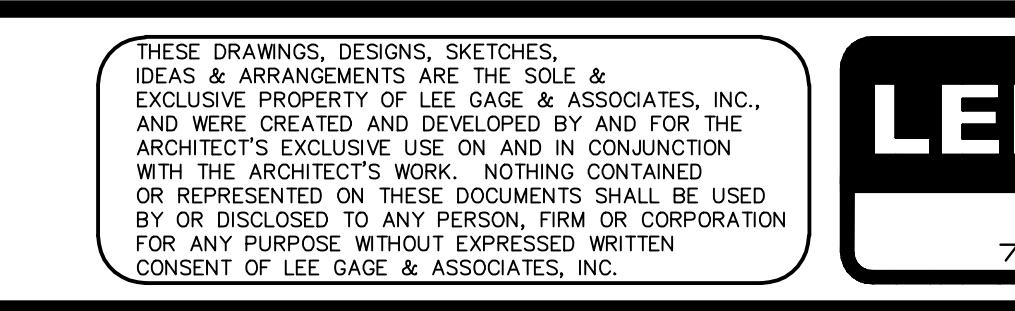
	COLOR 'A'	FRENCH TOAST (DRYVIT #400)
	COLOR 'B'	EGG SHELL CREAM (DRYVIT #109)
	COLOR 'C'	COCONUT SHELL (DRYVIT #942)
	STONE	CORONADO STONE (BROWN LEDGE)



3 NORTH ELEVATION
SCALE: 3/32" = 1'-0"



4 TRASH ENCLOSURE
SCALE: 3/32" = 1'-0"



5 SOUTH ELEVATION
SCALE: 3/32" = 1'-0"



PROPOSED:
HAMPTON INN & SUITES
7194 WEST KATHRYN AVENUE
FRESNO, CALIFORNIA 93722

Lee Gage & Associates, Inc.
7636 N. INGRAM SUITE 107
FRESNO, CALIFORNIA 93711
PHONE (559) 439-2222

architect • engineer • planner

THESE DRAWINGS, DESIGNS, SKETCHES, IDEAS & ARRANGEMENTS ARE THE SOLE & EXCLUSIVE PROPERTY OF LEE GAGE & ASSOCIATES, INC., AND WERE CREATED AND DEVELOPED BY AND FOR THE ARCHITECT'S EXCLUSIVE USE ON AND IN CONJUNCTION WITH THE ARCHITECT'S WORK. NOTHING CONTAINED OR REPRESENTED ON THESE DOCUMENTS SHALL BE USED BY OR DISCLOSED TO ANY PERSON, FIRM OR CORPORATION FOR ANY PURPOSE WITHOUT EXPRESSED WRITTEN CONSENT OF LEE GAGE & ASSOCIATES, INC.

LEE GAGE & ASSOCIATES, INC.

7636 n. ingram suite 107 fresno, california 93711 phone (559) 439-2222

architecture • engineering • planning

ARCHITECT

LEE GAGE & ASSOCIATES, INC.
C-6716
FRESNO, CALIFORNIA 93722

07/08/08

PROJ. NO. 08-001

SHEET **A-3**